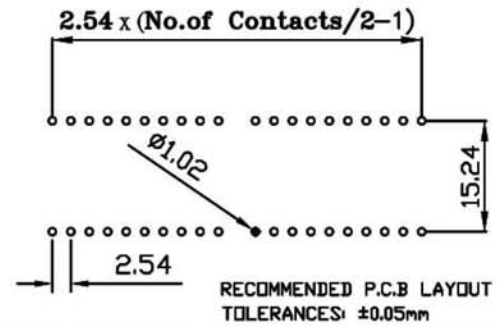
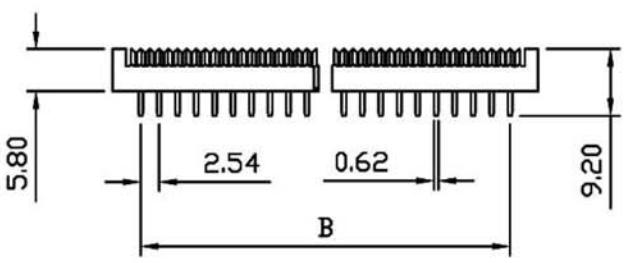
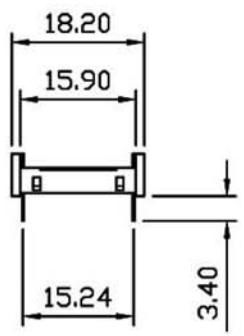
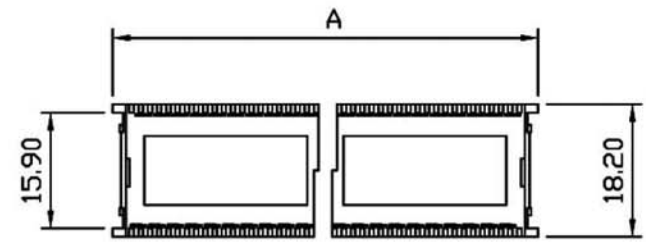
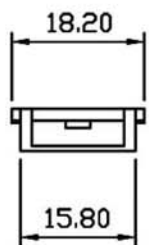
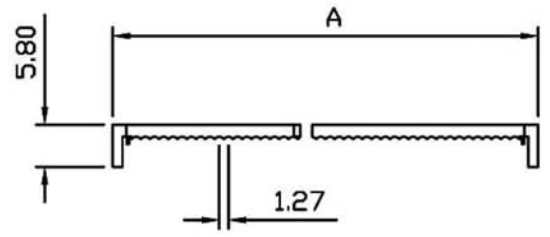
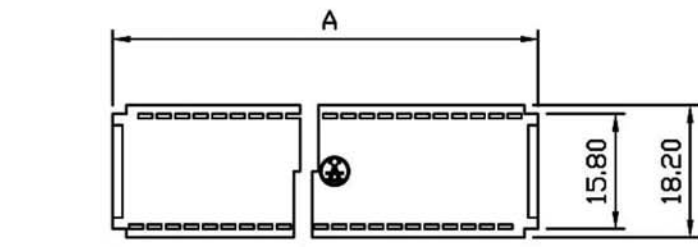


**MATERIALS:**  
 INSULATOR: P.B.T. 30% GLASS FIBER, UL 94V-0  
 CONTACTS: BRASS OR PHOSPHOR BRONZE,  
 UNDERPLATE: NICKEL  
 CONTACT AREA: 1u"~30u" SELECTIVE GOLD  
**ELECTRICAL:**  
 CURRENT RATING: 1AMP.  
 INSULATION RESISTANCE: 1000MΩ MIN.  
 DIELECTRIC WITHSTANDING: 500VAC  
 OPERATING TEMPERATURE: -55°C~+105°C

### ADIPX-X-LC-R

Z Tin Plated  
 G Gold Plated  
 Number of Contacts  
 08/10/14/16/20/24/28/40

POSITION	A	B
24P	35.73	27.94
28P	40.81	33.02
32P	45.89	38.10
36P	51.00	43.18
40P	56.20	48.26



UNLESS OTHERWISE SPECIFIED TOLERANCE			
±0.2			
SCALE: AS SHOWN	UNIT: mm	DRAWN NAME:	
DRAWN JOE	12/19/05	DIP PLUG (PITCH: 2.54mm) 1/3	
CHECKED	/ /	PRODUCT NO. ADIPX-x-LC-R	
APPROVED	/ /	FILE NAME:	
DATE	12/14/05	SIZE A4	REV. A

REV. A ECN-0512105(Emily)

REV.	DESCRIPTION	DATE	SIZE	REV.	FILE NAME:
A	ECN-0512105(Emily)	12/14/05	A4	A	ADIPX-x-LC-R